

STATE OF UTAH

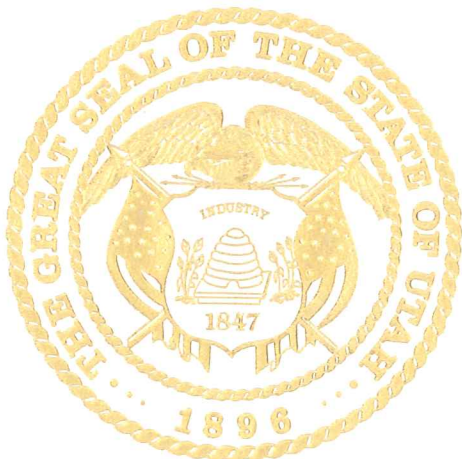


OFFICE OF THE LIEUTENANT GOVERNOR

CERTIFICATE OF ANNEXATION

I, GREG BELL, LIEUTENANT GOVERNOR OF THE STATE OF UTAH,
HEREBY CERTIFY THAT there has been filed in my office a notice of annexation from
PROVO CITY, dated October 8th, 2009, complying with Section 10-2-425, Utah Code
Annotated, 1953, as amended.

NOW, THEREFORE, notice is hereby given to all whom it may concern that the
attached is a true and correct copy of the notice of annexation, referred to above, on file
with the Office of the Lieutenant Governor pertaining to PROVO CITY, located in Utah
County, State of Utah.



IN TESTIMONY WHEREOF, I have
hereunto set my hand, and affixed the Great
Seal of the State of Utah this 2nd day of
November, 2009 at Salt Lake City, Utah.

A handwritten signature in black ink, appearing to read "Greg Bell".

GREG BELL
Lieutenant Governor

The City of
Provo, Utah

October 27, 2009



Lewis K. Billings
Mayor

Greg Bell
Lieutenant Governor of the State of Utah
Utah State Capitol Complex
East Office Building, Suite E325
P.O. Box 142220
Salt Lake City, Utah 84114-2220

Subject: Provo City - Notice of Annexation, Villages at Celebration

The Honorable Greg Bell:

This letter is to give you notice that on October 6, 2009, the Provo City Municipal Council passed Annexation Ordinance 2009-02 annexing into Provo City unincorporated Utah County land. This was approved by Mayor Lewis K. Billings on October 19, 2009, and published on October 25, 2009, as required by law.

The effective date of this annexation shall be the date of the Lieutenant Governor's issuance of a certificate of annexation pursuant to 10-2-425(1)(b) of the Utah State Code, Annotated.

Enclosed, please find a copy of Annexation Ordinance 2009-02 and a copy of the annexation plat.

If you have any questions regarding this letter, I may be reached at (801) 852-6404.

Sincerely,

PROVO COMMUNITY DEVELOPMENT

Office of
Community Development
www.provo.org/comdev
330 West 100 South
P.O. Box 1849
Provo, Utah 84603


James Bryan
Planning Supervisor

enclosure

Received

OCT 29 2009

Greg Bell
Lieutenant Governor

(801) 852-6400

FAX: (801) 852-6417

ANNEXATION ORDINANCE 2009-02

SHORT TITLE:

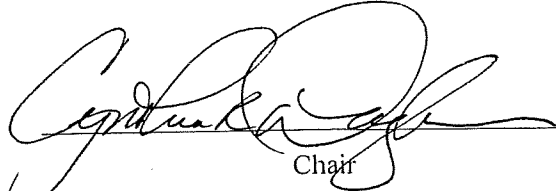
AN ORDINANCE ANNEXING 346.72 ACRES OF REAL PROPERTY LOCATED GENERALLY FROM GENEVA ROAD TO UTAH LAKE BETWEEN APPROXIMATELY 1300 NORTH AND 2000 NORTH. LAKEVIEW NORTH NEIGHBORHOOD. 08-0001A.

PASSAGE BY MUNICIPAL COUNCIL

ROLL CALL

DISTRICT	NAME	MOTION	SECOND	FOR	AGAINST	OTHER
CW 1	DAVID ACHESON			✓		
CW 2	STEVEN C. TURLEY			✓		
CD 1	CYNTHIA R. DAYTON			✓		
CD 2	CYNTHIA J. CLARK			✓		
CD 3	MIDGE JOHNSON		✓	✓		
CD 4	SHERRIE HALL EVERETT	✓		✓		
CD 5	CINDY L. RICHARDS			✓		
				TOTALS	7	0

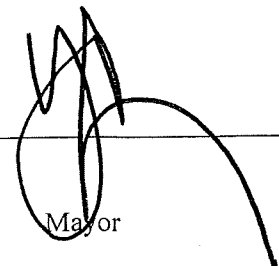
This ordinance was passed by the Municipal Council of Provo City, on the 6 day of October, 2009 on a roll call vote as described above. Signed this 8 day of October, 2009.



 Chair

APPROVAL BY MAYOR

This ordinance is approved by me this 19 day of October 2009.



 Mayor

ANNEXATION ORDINANCE 2009-02

III

CITY RECORDER'S CERTIFICATE AND ATTEST

This ordinance was recorded in the office of the Provo City Recorder on the _____ day of _____ 2009, with a short summary being published on the _____ day of _____ 2009, in The Daily Herald, a newspaper circulated in Provo, Utah. I hereby certify and attest that the foregoing constitute a true and accurate record of proceedings with respect to Ordinance Number 2009-.

SEAL

Signed this _____ day of _____ 2009.

City Recorder

1
2
3
4
5
6
7
8
9
10
11
12
13
14
15
16
17
18
19
20
21
22
23
24
25
26
27
28
29
30
31
32
33
34
35
36
37
38
39
40
41
42
43
44
45

ORDINANCE 2009-02.

AN ORDINANCE ANNEXING 346.72 ACRES OF REAL PROPERTY LOCATED GENERALLY FROM GENEVA ROAD TO UTAH LAKE BETWEEN APPROXIMATELY 1300 NORTH AND 2000 NORTH. LAKEVIEW NORTH NEIGHBORHOOD. 08-0001A.

WHEREAS, the owners of real property located generally from Geneva Road to Utah Lake between approximately 1300 North and 2000 North have submitted a petition to annex to Provo City 346.72 acres of property as described in the attached Exhibit "A" (the "Property"); and,

WHEREAS, the annexation petition was deemed accepted as provided in Section 10-2-405 (1)(a)(i)(B) of the Utah Code; and,

WHEREAS, applicable requirements of Section 10-2-401, et seq., of the Utah Code have been met; and,

WHEREAS, as required by Section 15.15.040 of the Provo City Code, the City's staff review committee evaluated the proposed annexation and has no objections to the annexation of the Property; and,

WHEREAS, on April 22, 2009 the Planning Commission held a duly noticed public hearing to consider the annexation petition and after such hearing the Planning Commission recommended to the Municipal Council that the Property be annexed as proposed; and,

WHEREAS, on September 1 and October 6, 2009 the Municipal Council held duly noticed public hearings to receive public comment and ascertain the facts regarding this matter, which facts and comments are found in the hearing record; and,

WHEREAS, after considering the recommendation of the Planning Commission and the staff review committee, and facts and comments presented to the Municipal Council, the Council finds (i) the Property located generally from Geneva Road to Utah Lake between approximately 1300 North and 2000 North, as described in the attached Exhibit "A", should be annexed, and (ii) such action reasonably furthers the health, safety, and welfare of the citizens of Provo.

NOW, THEREFORE, be it ordained by the Municipal Council of Provo City, Utah, as follows:

PART I:

The Property described in the attached Exhibit "A" and located generally from Geneva Road to Utah Lake between approximately 1300 North and 2000 North is hereby annexed.

PART II:

46 This ordinance shall take effect immediately after it has been posted or published as required
47 by law.

48
49 END OF ORDINANCE.

Exhibit "A"
Legal Description

Project Name: Celebration Addition Annexation

Address: West of Geneva Road to Utah Lake between approximately 1300 North and 2000 North

Applicant: Gardner and Associates

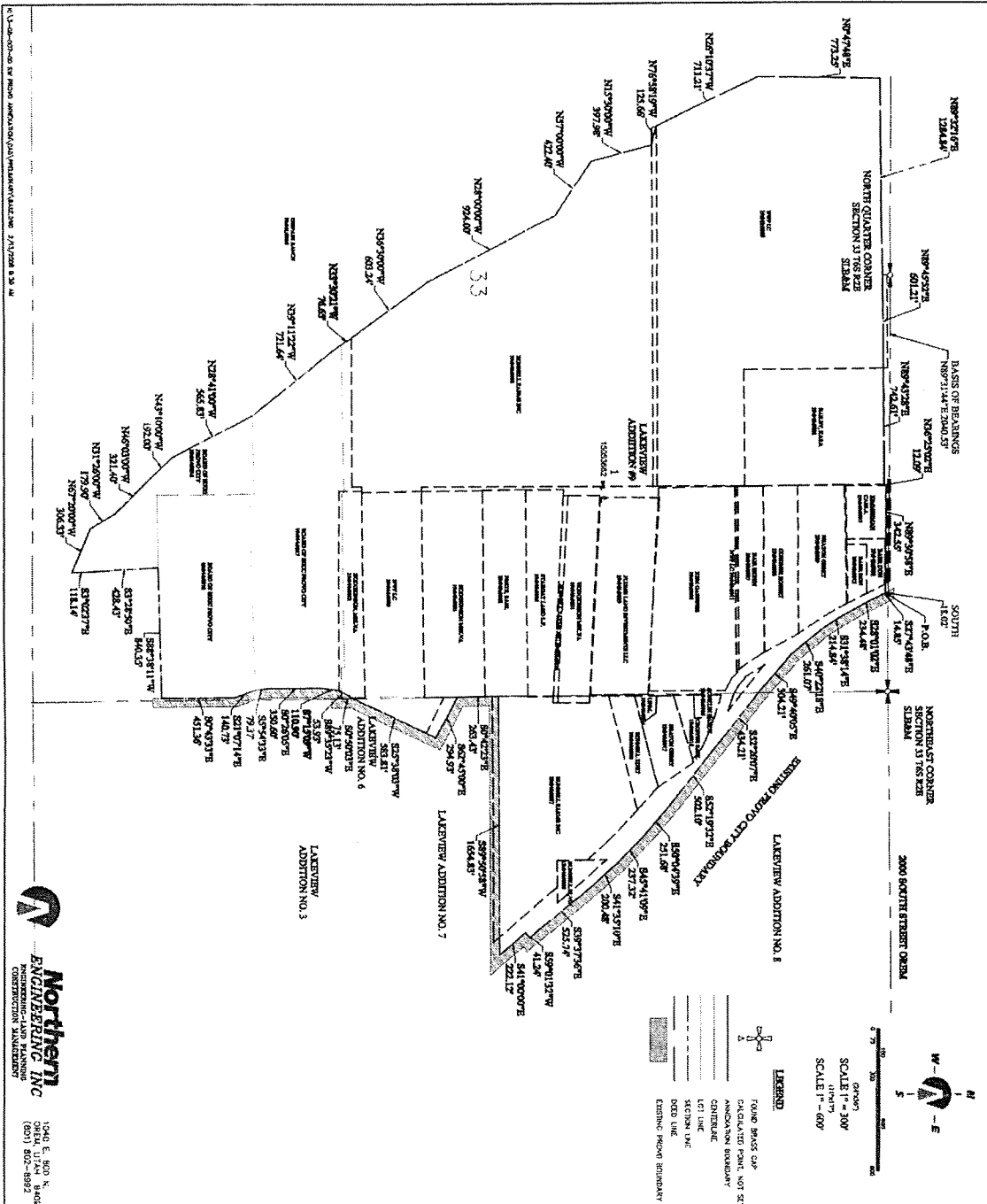
Community Development File #: 08-0001A

Date: July 6, 2009

COMMENCING AT THE NORTH QUARTER CORNER OF SECTION 33, TOWNSHIP 6 SOUTH, RANGE 2 EAST, SALT LAKE BASE & MERIDIAN; THENCE RUNNING SOUTH A DISTANCE OF 80.24 FEET; THENCE EAST A DISTANCE OF 2040.38 FEET, TO A POINT OF BEGINNING;

S. 27°43'48" E. A DISTANCE OF 14.85 FEET; S. 28°01'02" E. A DISTANCE OF 234.48 FEET; S. 31°38'14" E. A DISTANCE OF 214.84 FEET; S. 40°22'18" E. A DISTANCE OF 261.07 FEET; S. 49°40'05" E. A DISTANCE OF 304.21 FEET; S. 52°20'07" E. A DISTANCE OF 434.21 FEET; S. 52°19'32" E. A DISTANCE OF 502.10 FEET; S. 50°04'39" E. A DISTANCE OF 251.68 FEET; S. 45°41'09" E. A DISTANCE OF 237.32 FEET; S. 41°35'10" E. A DISTANCE OF 200.48 FEET; S. 39°37'36" E. A DISTANCE OF 525.74 FEET; S. 59°01'32" W. A DISTANCE OF 41.24 FEET; S. 41°00'00" E. A DISTANCE OF 222.12 FEET; S. 89°50'58" W. A DISTANCE OF 1654.83 FEET; S. 00°42'23" E. A DISTANCE OF 263.43 FEET; S. 62°45'00" E. A DISTANCE OF 294.93 FEET; THENCE S. 25°38'03" W. A DISTANCE OF 583.81 FEET; S. 00°50'03" E. A DISTANCE OF 1197.39 FEET; THENCE S. 88°38'11" W. A DISTANCE OF 857.37 FEET; THENCE S. 03°28'50" E. A DISTANCE OF 428.43 FEET; THENCE S. 03°02'37" E. A DISTANCE OF 118.14 FEET; THENCE N. 67°20'00" W. A DISTANCE OF 306.33 FEET; THENCE N. 31°26'00" W. A DISTANCE OF 179.90 FEET; THENCE N. 46°03'00" W. A DISTANCE OF 321.40 FEET; THENCE N. 43°10'00" W. A DISTANCE OF 192.00 FEET; THENCE N. 28°41'00" W. A DISTANCE OF 565.83 FEET; THENCE N. 39°11'22" W. A DISTANCE OF 721.64 FEET; THENCE N. 33°30'21" W. A DISTANCE OF 76.65 FEET; THENCE N. 36°30'00" W. A DISTANCE OF 603.24 FEET; THENCE N. 28°00'00" W. A DISTANCE OF 924.00 FEET; THENCE N. 57°00'00" W. A DISTANCE OF 422.40 FEET; THENCE N. 15°30'00" W. A DISTANCE OF 397.98 FEET; THENCE N. 76°58'19" W. A DISTANCE OF 125.66 FEET; THENCE N. 26°10'37" W. A DISTANCE OF 711.21 FEET; THENCE N. 00°47'48" E. A DISTANCE OF 773.25 FEET; THENCE N. 89°32'16" E. A DISTANCE OF 1284.84 FEET; THENCE N. 89°45'52" E. A DISTANCE OF 601.21 FEET; THENCE N. 89°43'28" E. A DISTANCE OF 742.61 FEET; THENCE N. 36°25'02" E. A DISTANCE OF 12.09 FEET; THENCE N. 89°30'58" E. A DISTANCE OF 342.55 FEET; THENCE S. 89°31'14" E. A DISTANCE OF 345.35 FEET TO THE POINT OF BEGINNING.

CONTAINS 346.72 ACRES MORE OR LESS.



SEVERAL CERTIFICATE

I, [NAME], being the duly qualified and authorized land surveyor and engineer, do hereby certify that the above described plat has been prepared and laid out in accordance with the laws of the State of Utah, and that the same is a true and correct representation of the facts as shown on the ground and that the same has been properly surveyed and shown on the ground and that the same is true and correct in all particulars.

WITNESSED my hand and seal of office this [DATE] day of [MONTH], 200[XX] at [CITY], Utah.

[NAME]

LAND SURVEYOR
(SEE SEAL BELOW)

ACCEPTANCES BY LAKEVIEW BODY

I, [NAME], being the duly qualified and authorized land surveyor and engineer, do hereby certify that the above described plat has been prepared and laid out in accordance with the laws of the State of Utah, and that the same is a true and correct representation of the facts as shown on the ground and that the same has been properly surveyed and shown on the ground and that the same is true and correct in all particulars.

WITNESSED my hand and seal of office this [DATE] day of [MONTH], 200[XX] at [CITY], Utah.

[NAME]

LAND SURVEYOR
(SEE SEAL BELOW)

ANNEXATION PLAT

LAKEVIEW ADDITION #9

SECTION 33 THE 2ND S.E. 34

PLAT NO. [NUMBER]

SCALE 1" = 80'

SCALE 1" = 600'

PROVIDED THAT THE ABOVE DESCRIBED PLAT HAS BEEN PREPARED AND Laid out in accordance with the laws of the State of Utah, and that the same is a true and correct representation of the facts as shown on the ground and that the same has been properly surveyed and shown on the ground and that the same is true and correct in all particulars.

WITNESSED my hand and seal of office this [DATE] day of [MONTH], 200[XX] at [CITY], Utah.

[NAME]

LAND SURVEYOR
(SEE SEAL BELOW)

